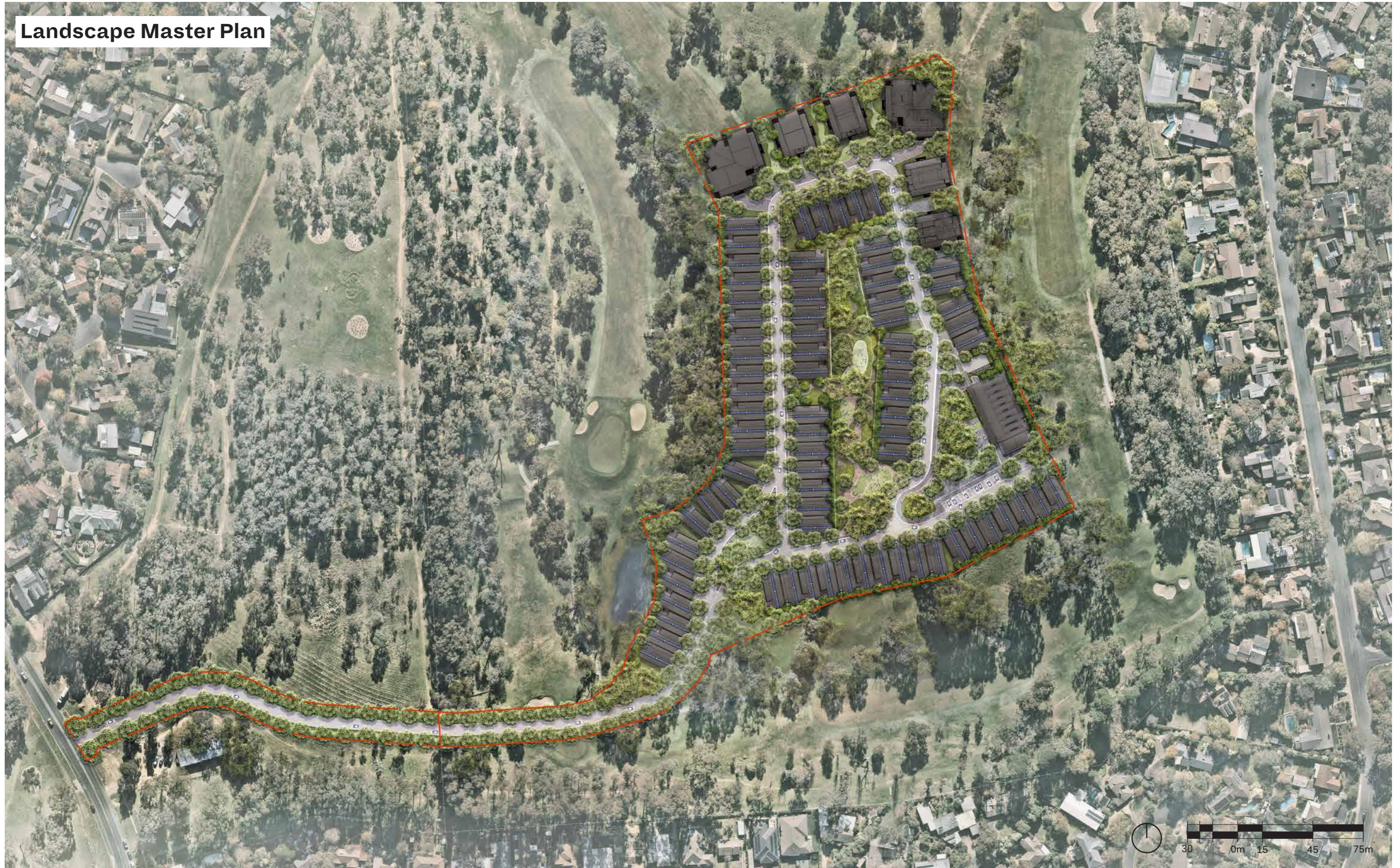


Federal Golf Course Landscape Plans

Landscape Master Plan



Landscape Plan

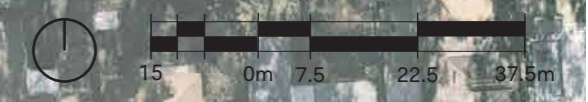
Entry Driveway



Tree lined driveway

Driveway access from
Kitchener Street

Kitchener Street



Landscape Plan

Southern Interface

Central Park -
Terraced open lawn

Proposed Entry Park with open
passive lawn bounded by planting.
The park includes existing trees to
be retained and proposed trees
for residents amenity.

Proposed Entry Park with open
passive lawn bounded by planting.
The park includes existing trees to
be retained and proposed trees
for residents amenity, as well as,
informal access to the Golf Course



A landscaped park that protects
and supports the existing and retained
hollow bearing trees

Planted interface to southern boundary



Landscape Plan

Northern Interface



Informal open space to provide amenity for apartment owners & residents

Driveway access to apartments

Central Park - Australian native planting to provide amenity for residents and support the local biodiversity

Central Park - Terraced Lawn

Community Facility driveway access

Pocket Park entry to Central Park

Understorey and tree planting to eastern boundary

